



Bansons Lane, Ongar, CM5

BUTLER  STAG



Introducing Brook View, a stunning development of just five, brand new three-bedroom houses exuding modern elegance and luxurious comfort. Nestled in the desirable village of Ongar, the houses are traditional in appearance and have been meticulously designed to offer a seamless blend of style, functionality, and spaciousness.



- Five Brand New Homes
- Siemens Appliances Throughout
- High Specification Finishes
- Off Street Parking plus Visitor Space
- Three Bedrooms | Two Bathrooms
- Peaceful Secure Location
- Underfloor Heating
- Electric Car Charger Provided Space

As you step inside, you are greeted by an inviting entrance hallway that sets the tone for the entire home. The open-concept layout immediately captures your attention, creating a sense of airiness and effortless flow. The generous living area, adorned with large windows, bathes the space in natural light, creating a warm and inviting atmosphere.

The gourmet kitchen boasts top-of-the-line stainless steel Siemens appliances, sleek quartz countertops, and ample storage space. Whether you're preparing a casual breakfast or hosting a family dinner party, this kitchen is designed to adapt to all circumstances.

The master bedroom is a true sanctuary, featuring a spacious layout, plush carpeting, and a good-sized built-in wardrobe. The accompanying en-suite bathroom is a haven of relaxation, complete with a separate glass-enclosed shower, and contemporary fixtures that add a touch of sophistication.

The two additional bedrooms are thoughtfully designed and offer ample space for family members or guests. These rooms can serve as cosy havens for relaxation, productive home offices, or versatile spaces to cater to your individual needs.

Every detail of these houses has been carefully considered, from the high-end finishes to the energy-efficient systems, ensuring a comfortable and sustainable living experience. The seamless integration of technology allows for convenient smart home features, such as underfloor heating and programmable thermostats, with the fastest internet possible. Each property also offers substantial storage with each loft being boarded.

The neatly landscaped backyard offers the perfect spot for enjoying morning coffee





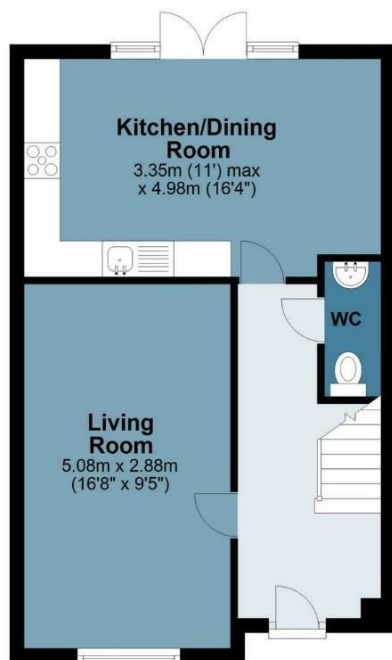
Brook View

Approx. Gross Internal Area 84 Sq M (904 Sq Ft)

BUTLER & STAG

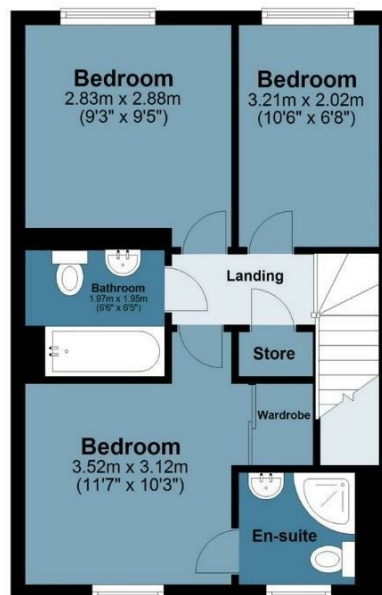
Ground Floor

Approx. 39.2 sq. metres (422.1 sq. feet)



First Floor

Approx. 38.9 sq. metres (418.4 sq. feet)



Floor plan is for illustrative purposes only and is not to scale. Every attempt has been made to ensure the accuracy of the floor plan shown, however all measurements, fixtures, fittings and data shown are an approximate interpretation for illustrative purposes only.

IMPORTANT NOTICE - These particulars have been prepared in good faith and they are not intended to constitute part of an offer or contract. We have not performed a structural survey on this property and the services, appliances and specific fittings have not been tested. All photographs, measurements, floor plans and distances referred to are given as a guide and should not be relied upon.

BUTLER & STAG

☎ 01992 667666

🏠 4 Forest Drive, Theydon Bois, Essex, CM16 7EY

✉ theydon@butlerandstag.com

www.butlerandstag.uk